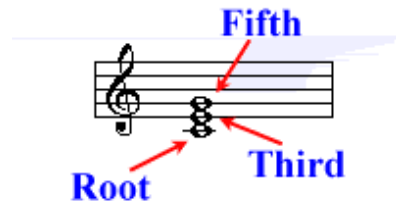


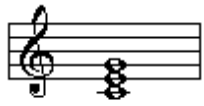
Chords & Symbols

Triad

A triad is a group of three notes having a specific construction and relationship to one another. They are constructed on 3 consecutive lines or three consecutive spaces. Each member of the triad is separated by an interval of a third. The triad is composed of a Root, Third, and Fifth.



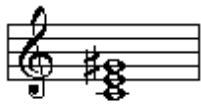
There are four types of triads: major, minor, diminished and augmented.



Major



minor



augmented



diminished

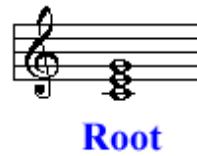
Chords & Symbols

Inversions of Triads

All triads have three positions that they can be arranged in. The root, 1st inversion, and 2nd inversion.

Root Position Triad

If the triad root is in the lowest voice then the triad is in Root Position.



1st Inversion

If the third of the triad is in the lowest voice the triad is the 1st inversion.



2nd Inversion Triad

If the 5th of the triad is in the lowest voice the triad is the 2nd inversion.

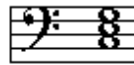
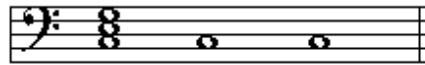


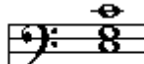
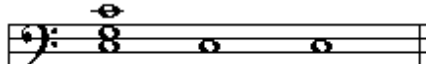
Chords & Symbols

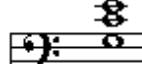
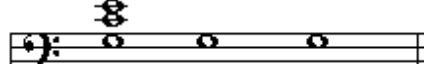
Figured Bass

Figured Bass was developed in the early Baroque period. It was a system of musical shorthand that made the writing of keyboard parts easier. It was customary for the composer to write out the bass line and to place Arabic numerals above or below the figured bass to indicate the harmonies. The keyboard part was called the continuo, which was improvised by the player.

In Figured bass the arabic numerals represent the intervals that sound above a given bass part. Certain abbreviations have become well known.

Chord	Figure	Abbreviation
		
	5 3	

Chord	Figure	Abbreviation
		
	6 3	6

Chord	Figure	Abbreviation
		
	6 4	6 4

Chords & Symbols

Alterations

Alterations from the given key signature are indicated by placing an accidental before the arabic numeral.

An Accidental, such as a sharp, flat, or natural that appears by itself under a bass note indicates a triad in root position with the third interval above the bass note sharpened, flatted or naturalized.

Any sharp, flat or natural sign beside the Arabic number indicates that this interval above the bass note should be sharpened, flatted, or naturalized depending on the symbol.

#6, b6, 6, #6
 4 b4

Sometimes, composers used a slash through the Arabic number instead of a sharp. They both mean the same thing.

Roman Numeral Analysis

In the early 1800's, German composers started to use roman numerals to symbolize harmony. Each note in a scale can have a triad or chord built above it. Upper case (Major) or lower case (minor) Roman Numerals are used to indicate the type of chord. I, IV, V are Major triads/chords, ii,iii,vi are minor triads/chords, and vii is diminished.

