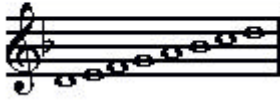


Minor Scales

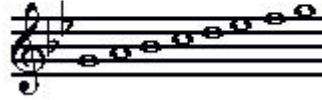
These scales are all the **natural minor scales**.

To obtain the **harmonic minor** just raise the 7th note one half-step. (eg. In the 'd' scale, 'c' would turn to 'c#'. In 'c' scale, 'Bb' would turn to 'b' natural.) To obtain the **melodic minor** just raise the 6th & 7th one half-step on the way up, and then cancel that on the way down.

d



g



c



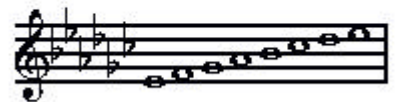
f



b^b



e^b



a^b



a



e



b



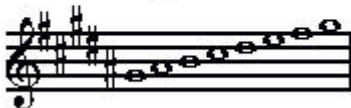
d[#]



c[#]



g[#]



a[#]

